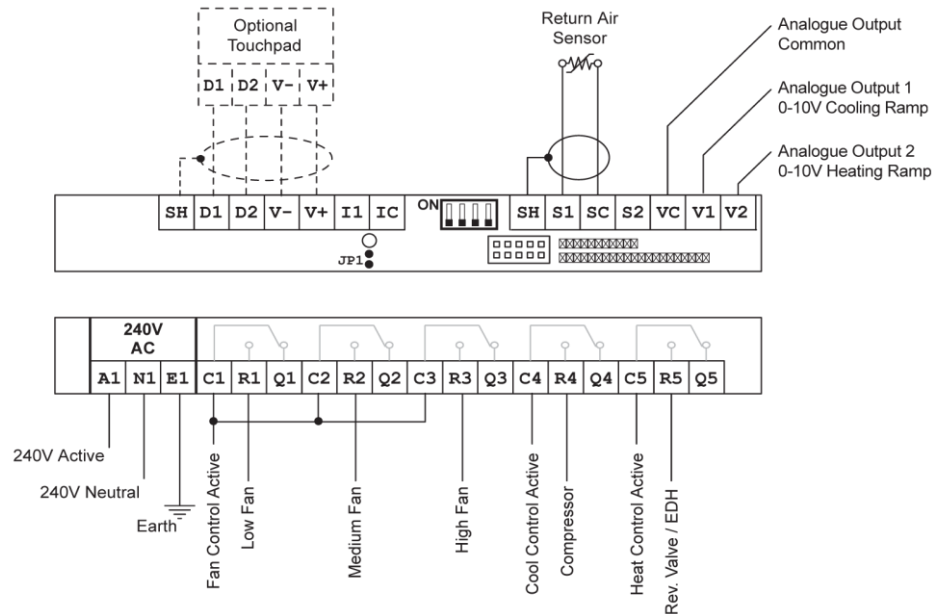
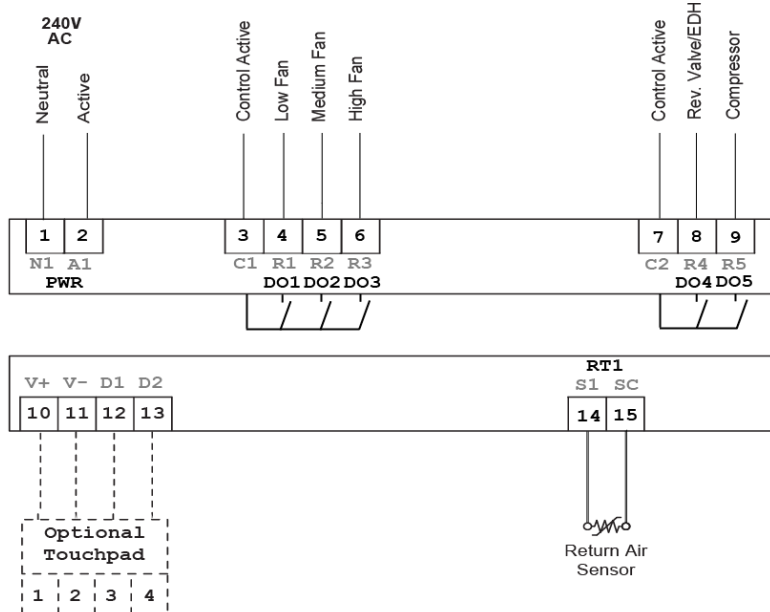


# BlackBox to Vector Changeover Quick Guide TLR-D5-311R

## BlackBox Wiring



## Replacement Wiring for Vector TLR-D5-311R



## Parameter Settings

1. Press UP and DOWN button simultaneously for three seconds. The display will indicate the firmware version in the upper large digits and the revision in the lower small digits. Pressing any key will show: CODE.
2. Select a password using UP or DOWN buttons. Select 241 for controls parameters. Press OPTION (● button) after selecting the correct password.
3. Once logged in, the parameter is displayed immediately
4. Select the parameters with the UP/DOWN keys. Change a parameter by pressing the OPTION key. The MIN and MAX symbols show up and indicate that the parameter may be modified now. Use UP and DOWN key to adjust the value.
5. After you are done, press OPTION or POWER in order to return to the parameter selection level.
6. Press the POWER key again so as to leave the menu. The unit will return to normal operation if no key is pressed for more than 5 minutes.

## 4 Important Parameters to Change

Parameter	Description	Range	Required
FC08	Mold Protection: In mold protection mode, the fan keeps running independent of the temperature as long as the unit is switched on.	ON, OFF	<b>ON</b>
FC11	Control Option: 0 = Cooling Only 1 = Heat Only <b>2 = 2-pipe system</b> 3 = 4-pipe system 4 = cooling with fan support, heating without fan support	0 - 4	<b>2</b>
FC15	Reversing valve in binary mode: 0 = No reversing valve 1 = Reversing valve while heating 2 = Reversing valve while cooling	<b>0 - Electric Heat</b> <b>1 - Reversing Valve</b>	
FC17	External Input Type: 0 = No External Input <b>1 = External Temperature Sensor</b>	0 - 9	<b>1</b>

## Complete Programming Reference

Visit [www.insightcontrol.net.au](http://www.insightcontrol.net.au)

## Technical Support Number

1300 665 831